



Osaka Research Institute of Industrial Science and Technology

<https://orist.jp/>



Izumi Center



Morinomiya Center

Through research and support activities, we try to create new value together with enterprises, and contribute to development of industries in Osaka.

Technical Consultation

We give counsel or answers to inquiries on technological problems free of charge by telephone calls or by visits to the Institute.

Technology Transfer

We hold

- annual reporting session to publish results of researches.
- forums and seminars to announce accumulated technological know-how and information.

Technical Training

We accept trainees who wish to acquire specific technological knowledge, research know-how and the skills of operating latest equipment.

Information on ORIST

Information on ORIST, such as the results of researches and the program of seminars, is provided through the Annual Research Report, the Direct Mail service and the Internet Home Page.

Library

The open library collects literature on science and technology, technological journals and statistical data and publications on policy as well as copies of JIS and other standards

Commissioned Research

ORIST undertakes researches requested from small to medium sized enterprises (SMEs) under commission.

Testing

We accept requests from enterprises for a wide variety of tests, analyses and measurements.

Facilities Services

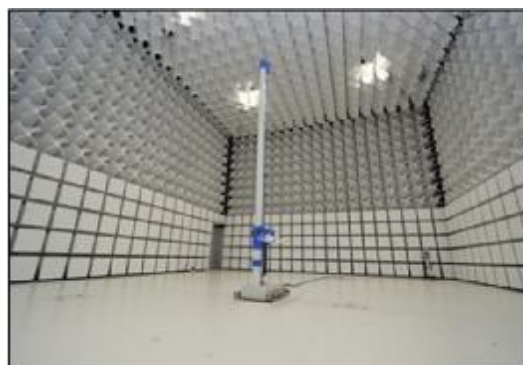
Facilities and equipment are generally available for use. SMEs can also utilize open laboratories for development of new technologies and products.

Support of Societies

We support activities of technical societies in various fields of industry to promote information exchange among SMEs on technological issues.

Facilities for Cooperative Research Projects

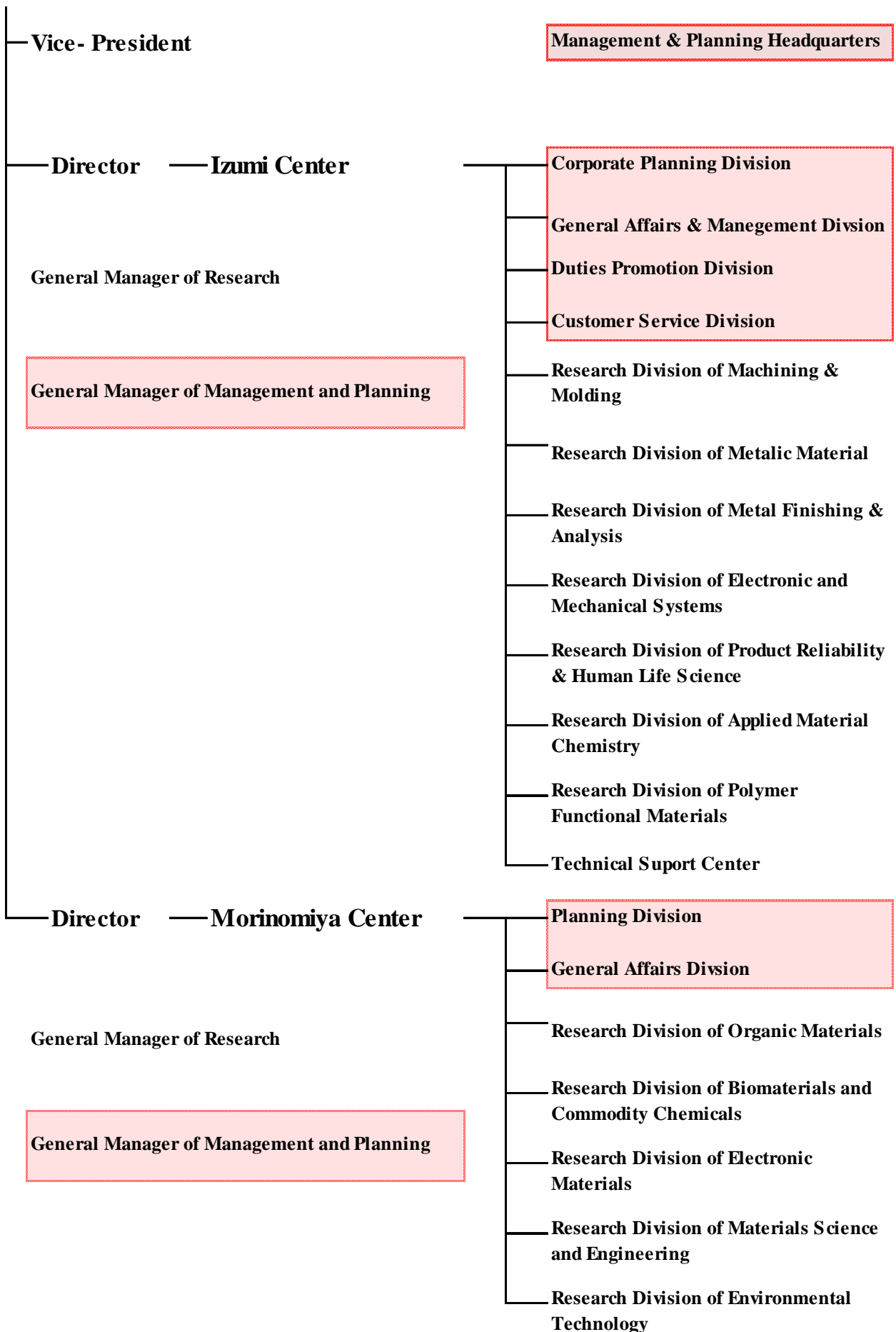
Special Laboratories are set up for large scale research projects under cooperation with industries and universities.



Newly Constructed Semi-anechoic Chamber (10m method) for EMS

ORIST Organization Chart

President



Outline

ORIST is the industrial Institute established by both Osaka prefectural government and Osaka municipal government.

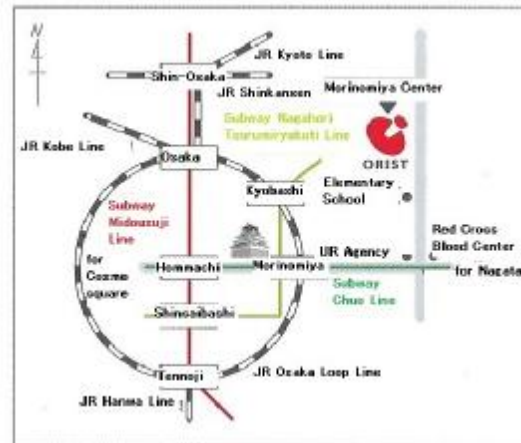
Main activities are research, consulting, testing and providing technological information to support SMEs.

Our goal is contribution to economic growth and improvement of the lives of residents in Osaka by promoting the development of SMEs.

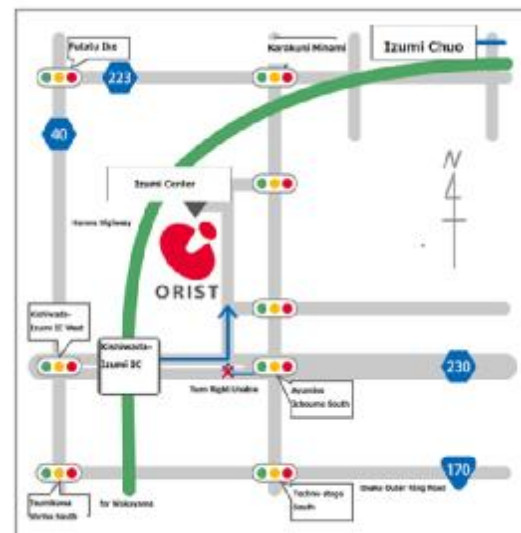
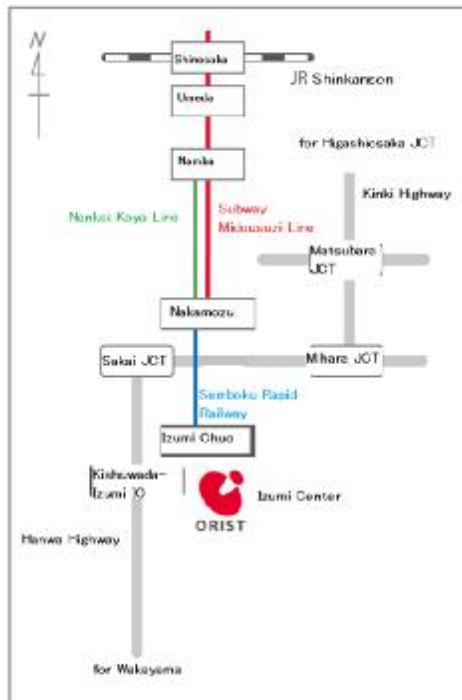
Total number of staff 241 (Researcher 201 as of Apr. 1 2017)

Access

Morinomiya Center



Izumi Center



**Local Incorporated Administrative Agency
Osaka Research Institute of Industrial Science and Technology**

Izumi Center

7-1, Ayumino-2, Izumi-city, Osaka 594-1157

TEL:+81-725-51-2525

Morinomiya Center

6-50, Morinomiya-1, Joto-ku, Osaka-city, Osaka 536-8553

TEL:+81-6-6963-8011

<https://orist.jp>

Our support service is only available to Japanese companies
(including foreign companies with subsidiaries in Japan).